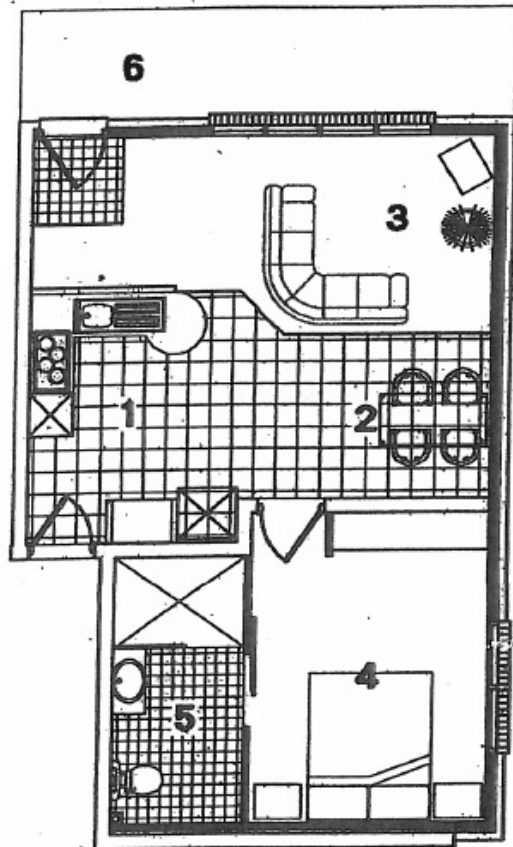


ATTACHMENT 7 – Layout Plan of the Unit Selected

BRODRIBB RETIREMENT VILLAGE



1. KITCHEN  
3045x2400 (10'2" x 8'0")
2. DINING  
2275x3300 (7'7"x 11'0")
3. LIVING  
5100x2775 (17'0"x 9'3")
4. BEDROOM 1  
3750x3130 (12'6"x 10'5")
5. BATHROOM  
1800x3600 (6'0"x 12'0")
6. COVERED ENTRY

**FLOOR PLAN**  
**UNITS 17 & 18**